


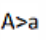








ARUtils

Removing the tedium

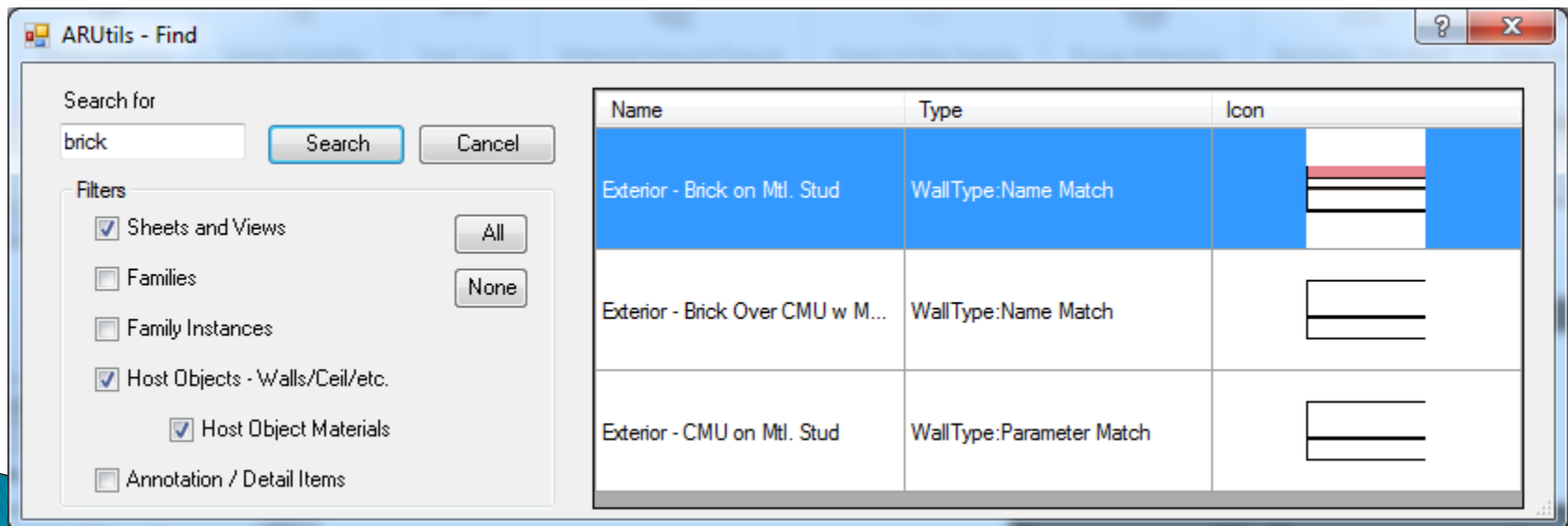
ARUtils – What it does

- ▶ Simplifies **navigating** your project
- ▶ Simplifies **complex operations**
- ▶ Simplifies achieving **consistent data**

									
ARFind	Make Section	Setup Visibility	A>a Text Case	Material Import/Export	Head of the Family	View Cleanup	Revision / Protect	ABOUT About ARUtils	ARSS Standards
Find	Views	Visibility	Notes	Import / Export	Files	Utils	Monitor	Help	ARSS Help

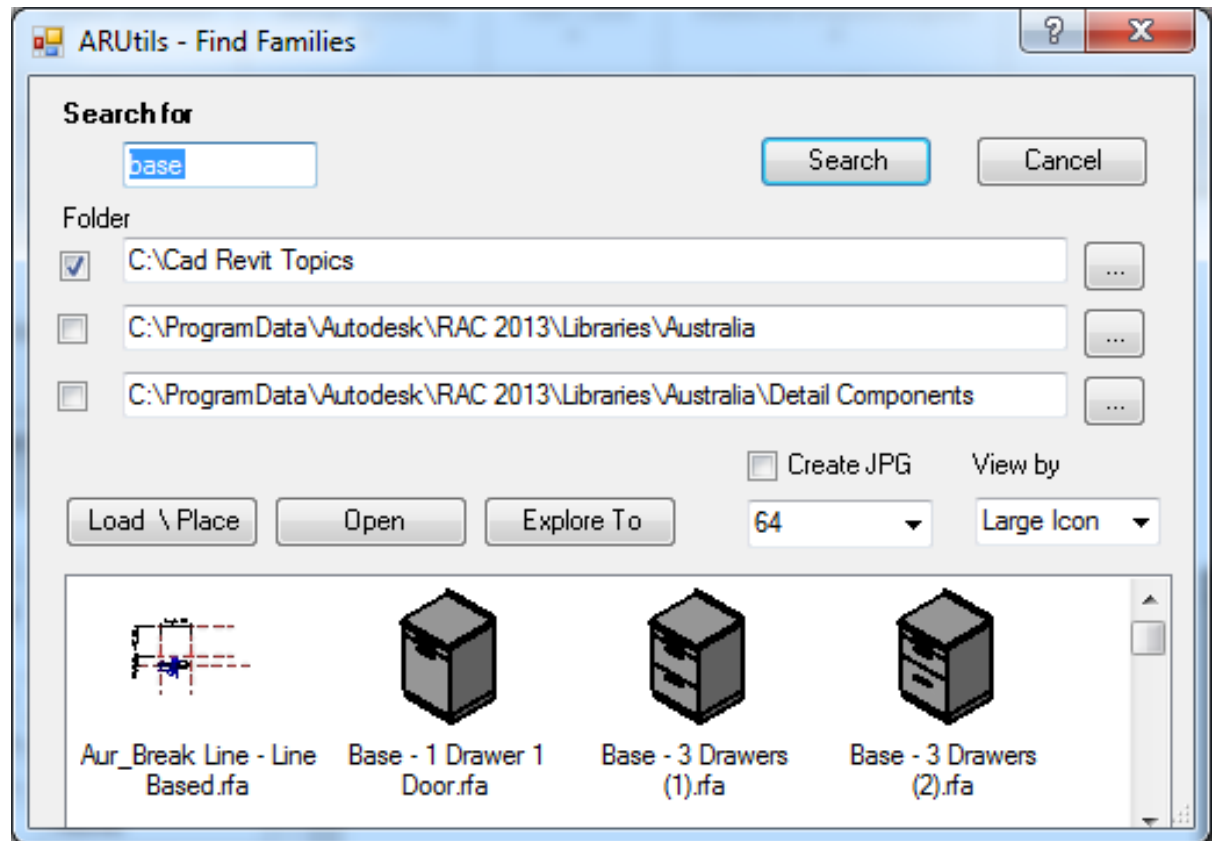
ARUtils – Navigate your Project

- ▶ Easily find
 - Views
 - Families
 - Walls using a material
 - Items of a specific parameter value



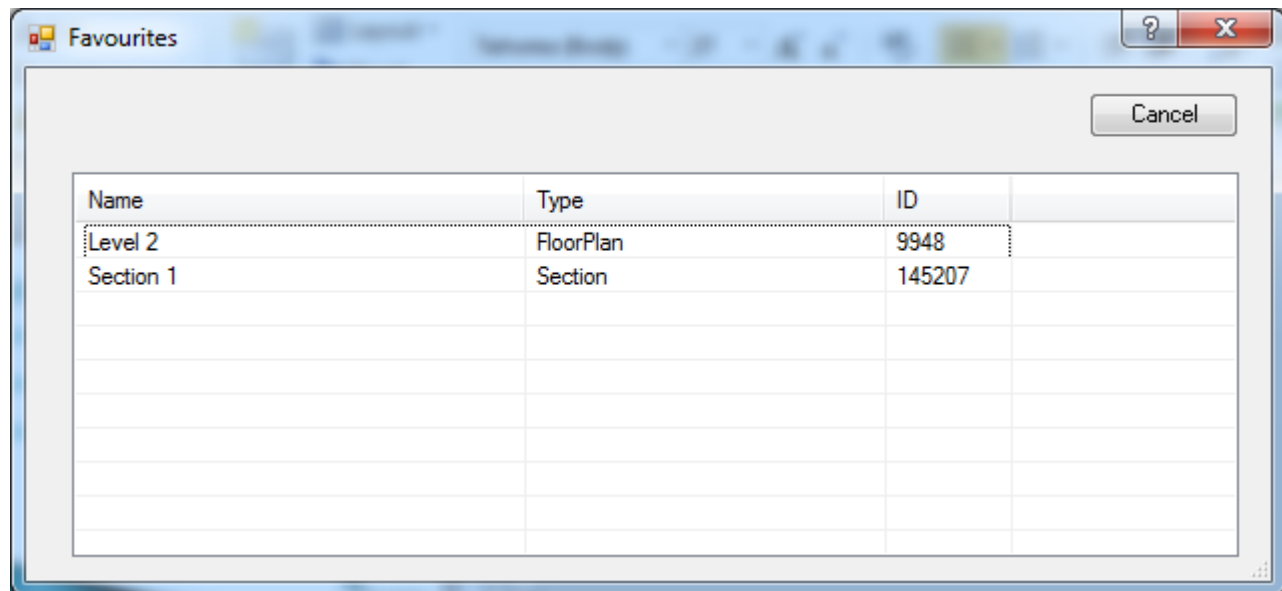
ARUtils – Find Your Families

- ▶ Easily find families on disk



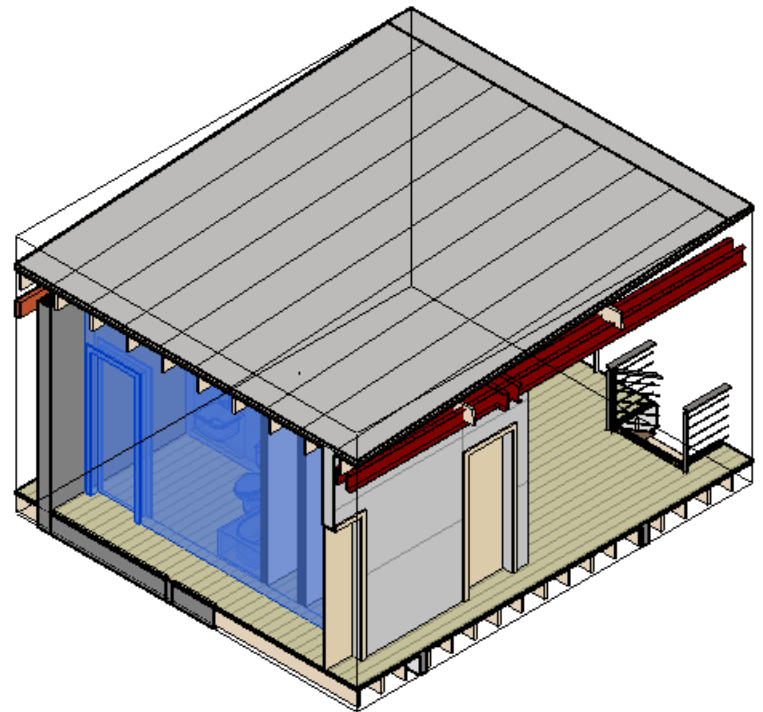
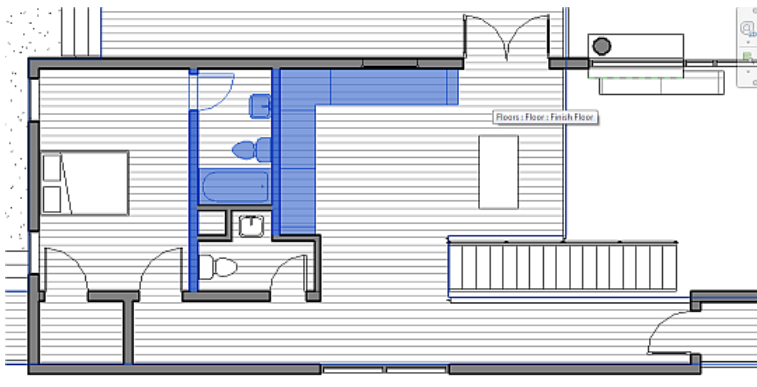
ARUtils – Favourites

- ▶ Have project specific favourites.



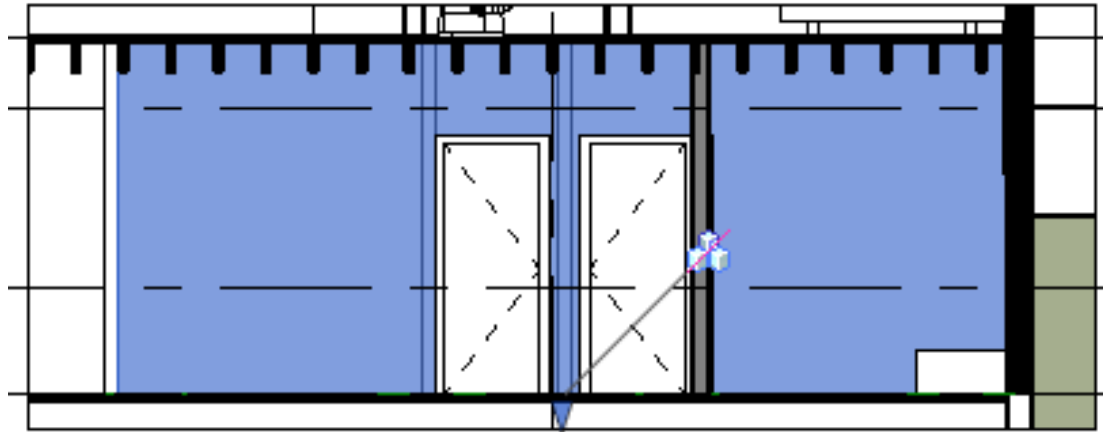
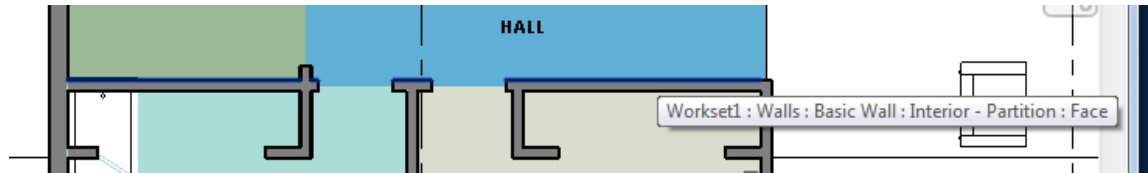
ARUtils – Navigate your Project

- Go to a 3d view of selected items



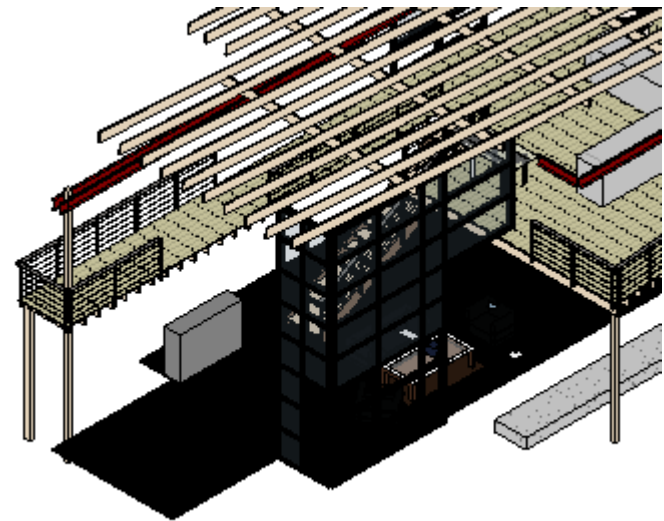
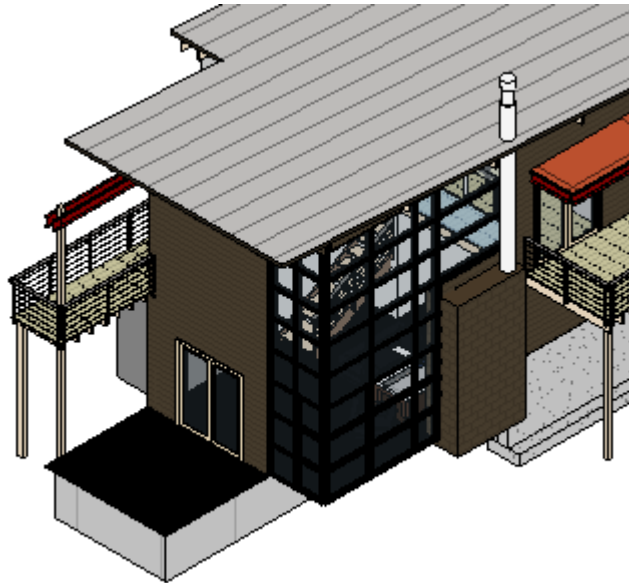
ARUtils – Navigate your Project

- ▶ Go to a Section view of a wall face



ARUtils – Navigate your Project

- ▶ Accelerated visibility control of categories



ARUtils – Investigate your Project

- ▶ Isolate Items based on:
 - Worksets
 - InPlace Families
 - Design Options
 - Items with a parameter value
 - Overriden Elements

ARUtils – Complex Operations

- ▶ Named PDF creation
- ▶ Create Door Schedules
- ▶ Tag wall finishes in plan
- ▶ Schedule Room Finishes
- ▶ Manage Imports
- ▶ Sequential renumbering
- ▶ Named Exports
- ▶ Automatically link nested family parameters
- ▶ Synchronise families on disk and in project
- ▶ Date stamp elements when they change
- ▶ Document Navisworks clashes
- ▶ Process files Out of Hours

ARUtils – Complex Operations

- ▶ Use Ghost Families
- ▶ Dimension Walls
- ▶ Tag Views
- ▶ Area and Room Masses
- ▶ Manage Parameters
- ▶ Pick and Paint Materials
- ▶ Delete Revision Clouds
- ▶ Manage View Filters
- ▶ Keynote Finder
- ▶ Create Room Views and Sheets
- ▶ Create Scope Box Views and Sheets
- ▶ Site Tools

ARUtils – Named PDF

- ▶ Create PDFs and DWGs named according to sheet or view parameters

The screenshot shows a Windows-style dialog box titled "NameFormatForm". It is divided into two main sections: "Control File" and "Name Builder".

Control File Section:

- Name:** A text field containing "C:\Program Files\arutils\data\plotname.xls" with a browse button ("...") and an "Edit" button to its right.
- Template:** A dropdown menu currently showing "Schematic Design".

Name Builder Section:

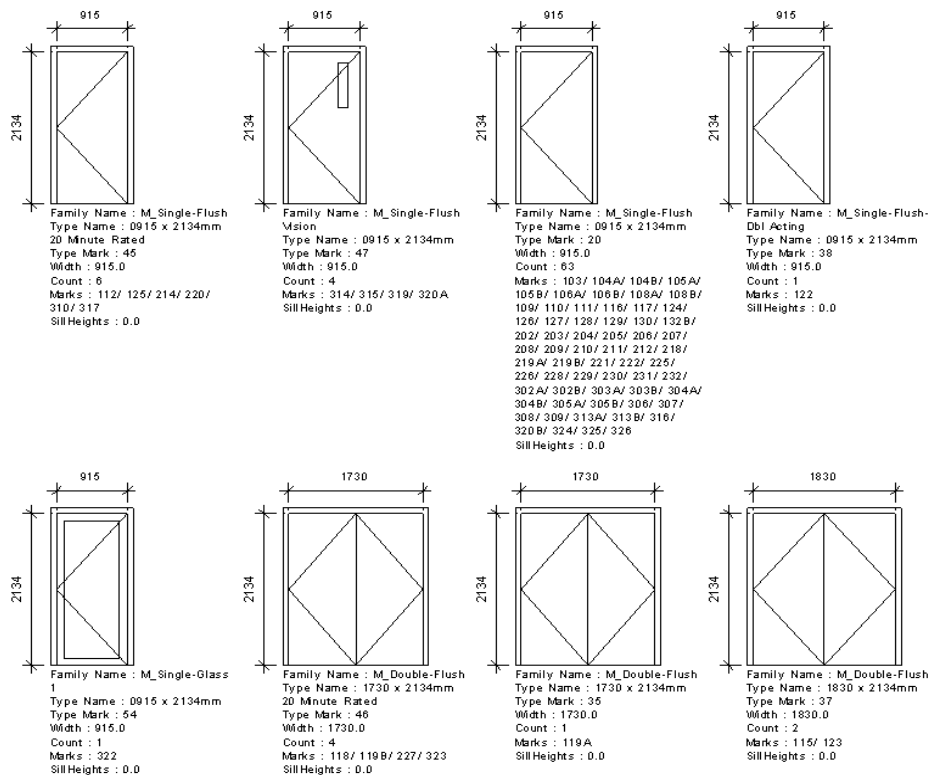
Prefix	Sheet Parameter	Suffix
SD-	"Sheet Number"	-
	"Sheet Name"	-{
	"Current Revision"	}

Preview Name: A text field showing the result of the current configuration: "SD-\"Sheet Number\"-\"Sheet Name\"-{\"Current Revision\"}"

Buttons: "Export to Control File" and "OK" are located at the bottom of the dialog.

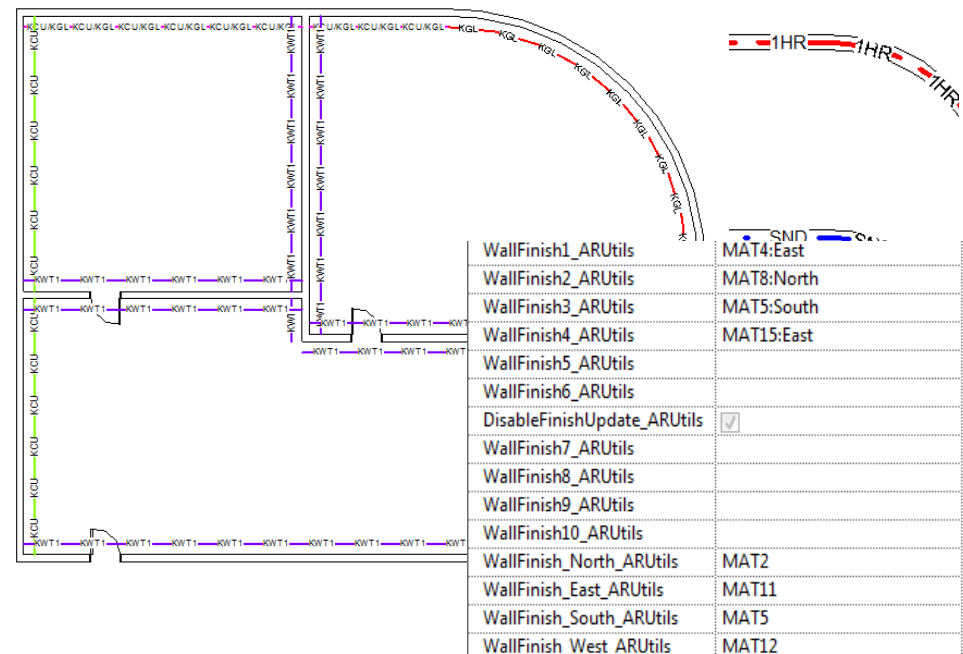
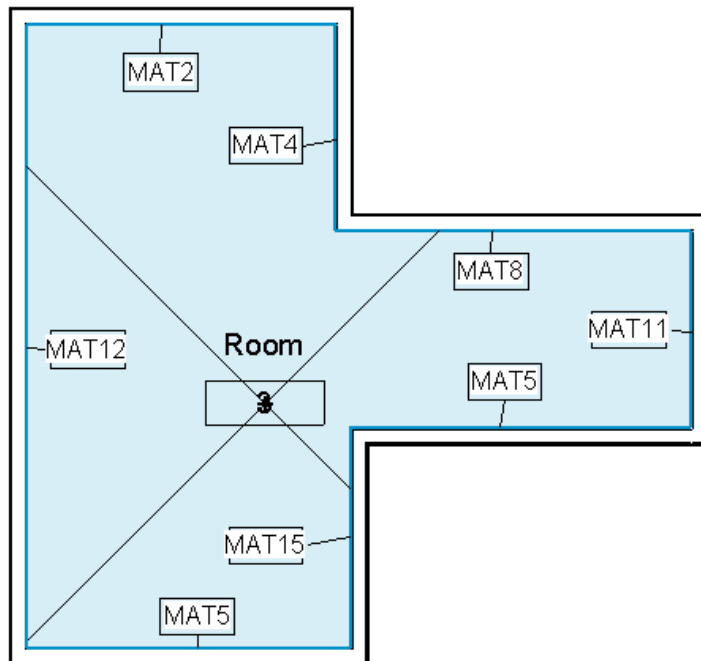
ARUtils – Door Schedules

► Create Door Schedules (or in fact any schedule)



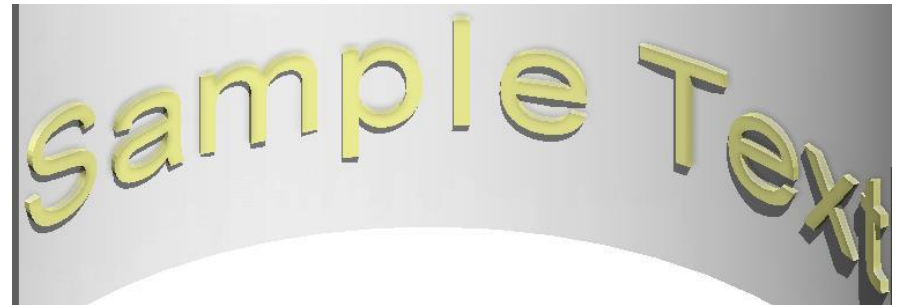
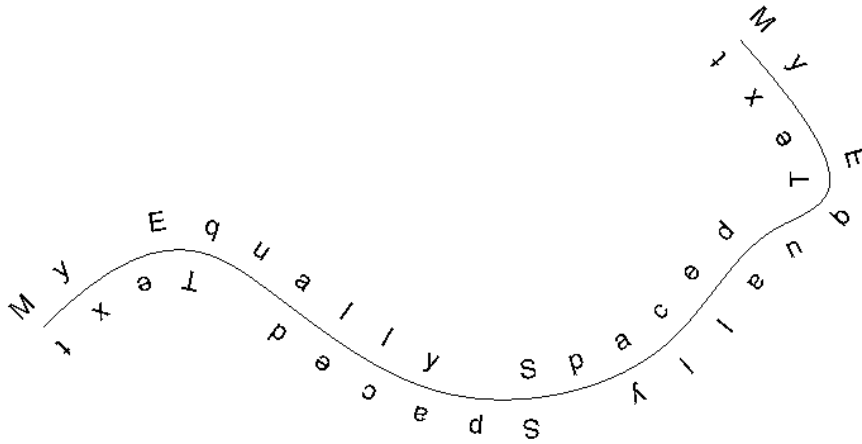
ARUtils – Room Finishes

- Assign and tag room finishes. Indicate wall parameters such as Fire Rating



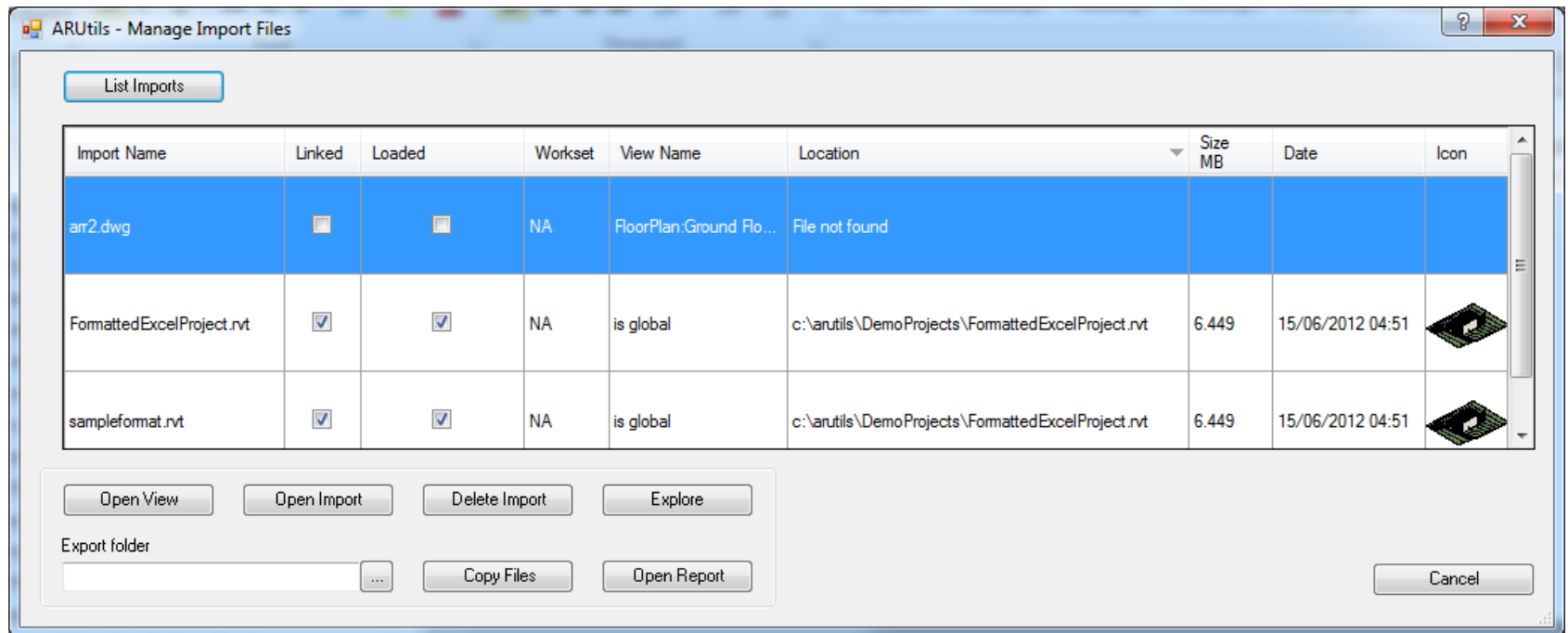
ARUtils – Text on Curves

- In 2D or 3D



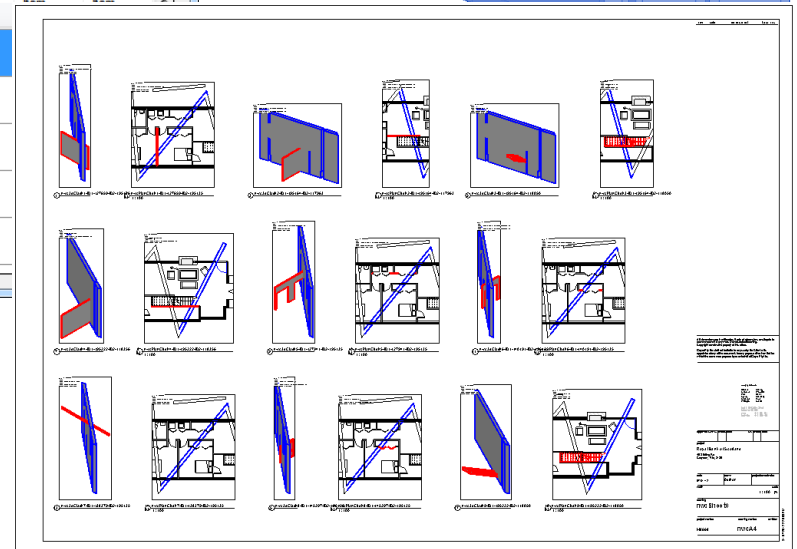
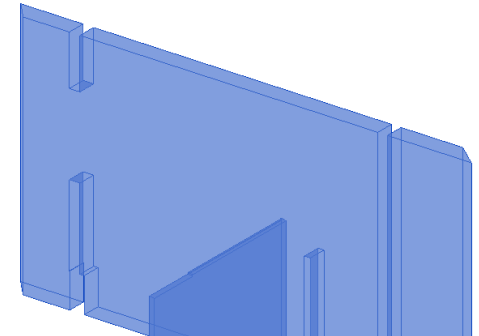
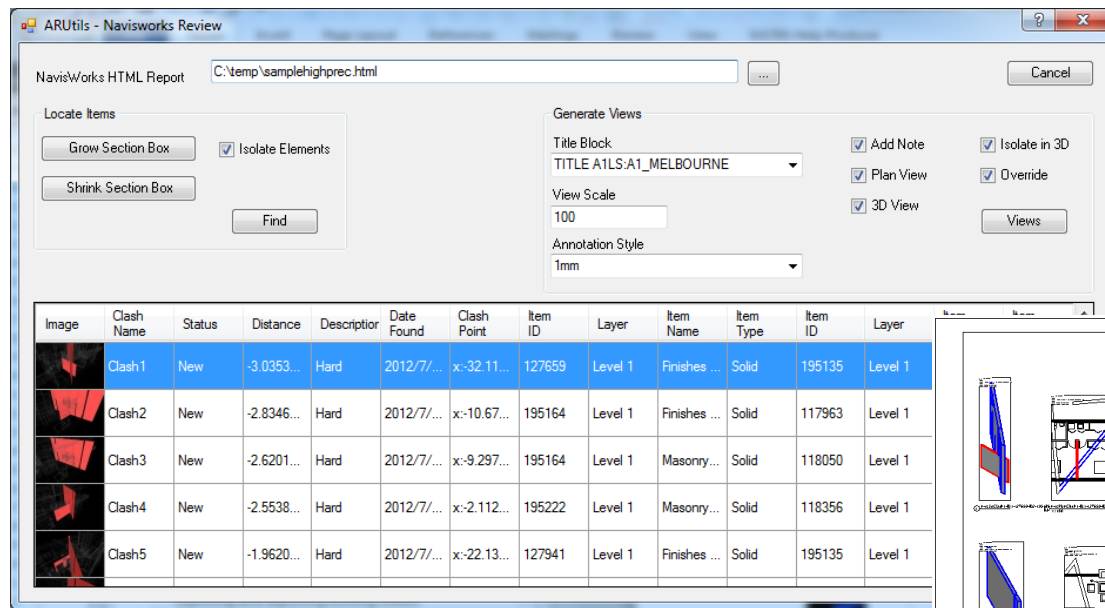
ARUtils – Managing Imports

► Managing Imports



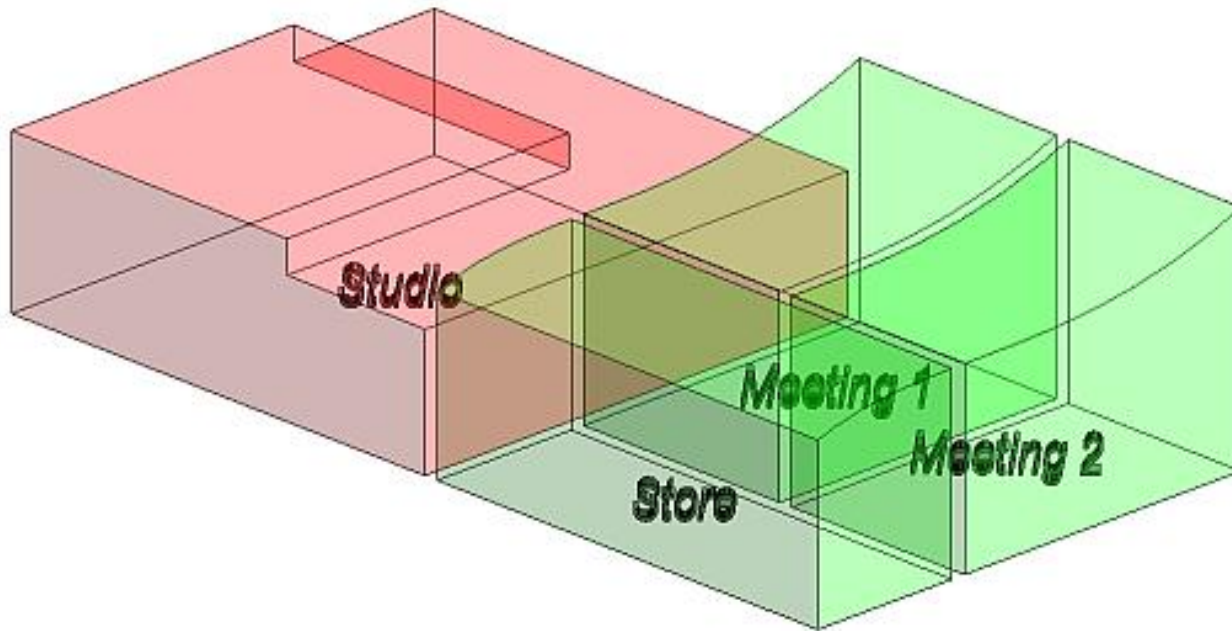
ARUtils – NavisWorks Review

► Manage NavisWorks clashes easily



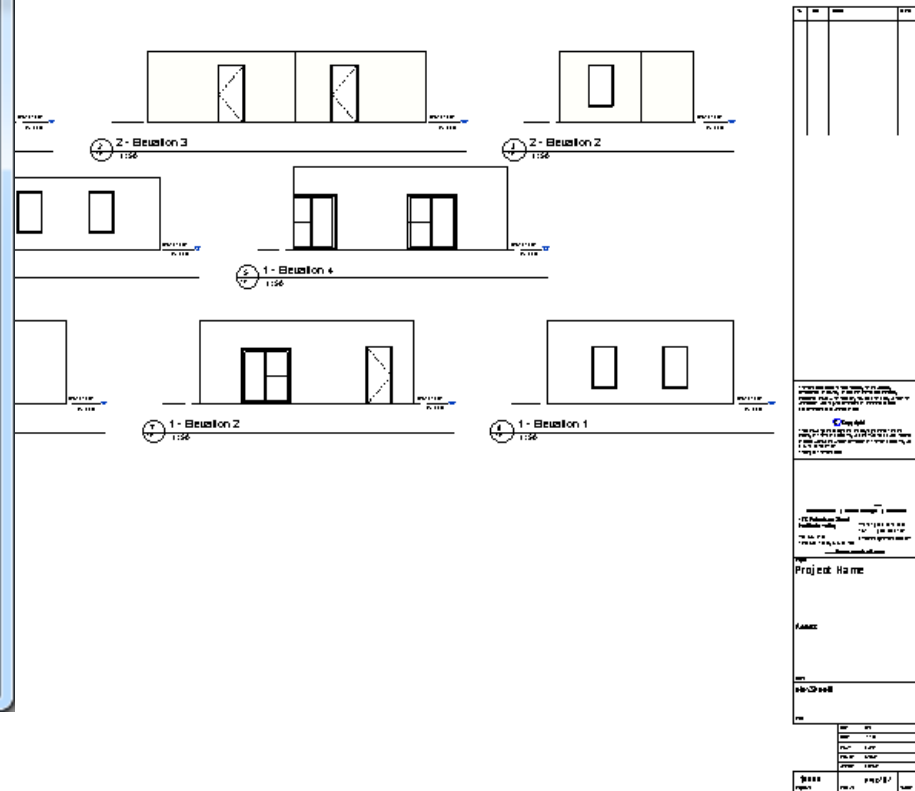
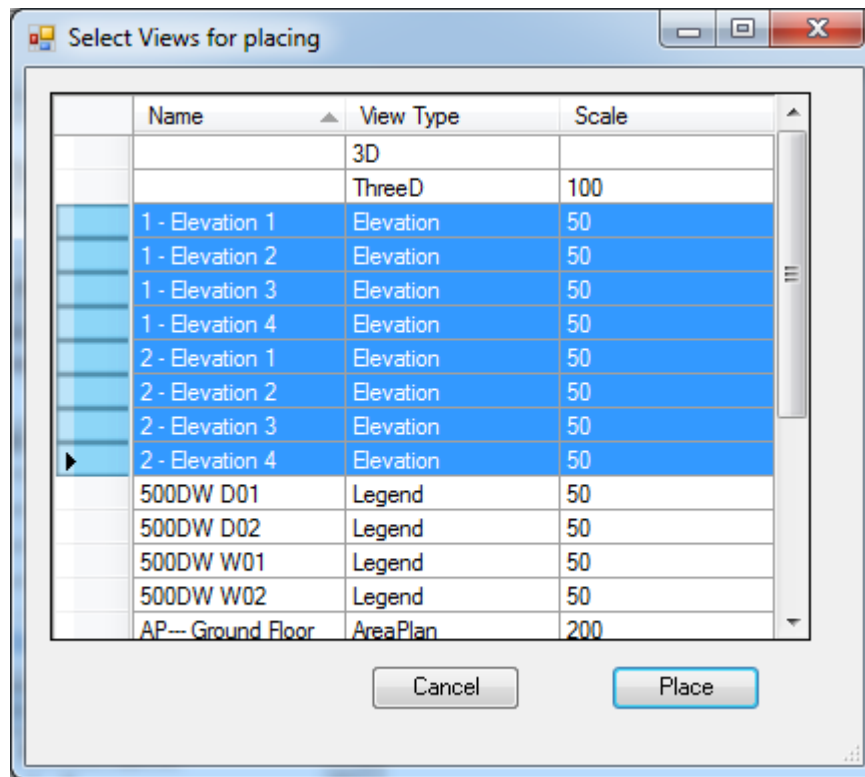
ARUtils – Area & Room Masses

- ▶ Create and Label Room and Area Masses



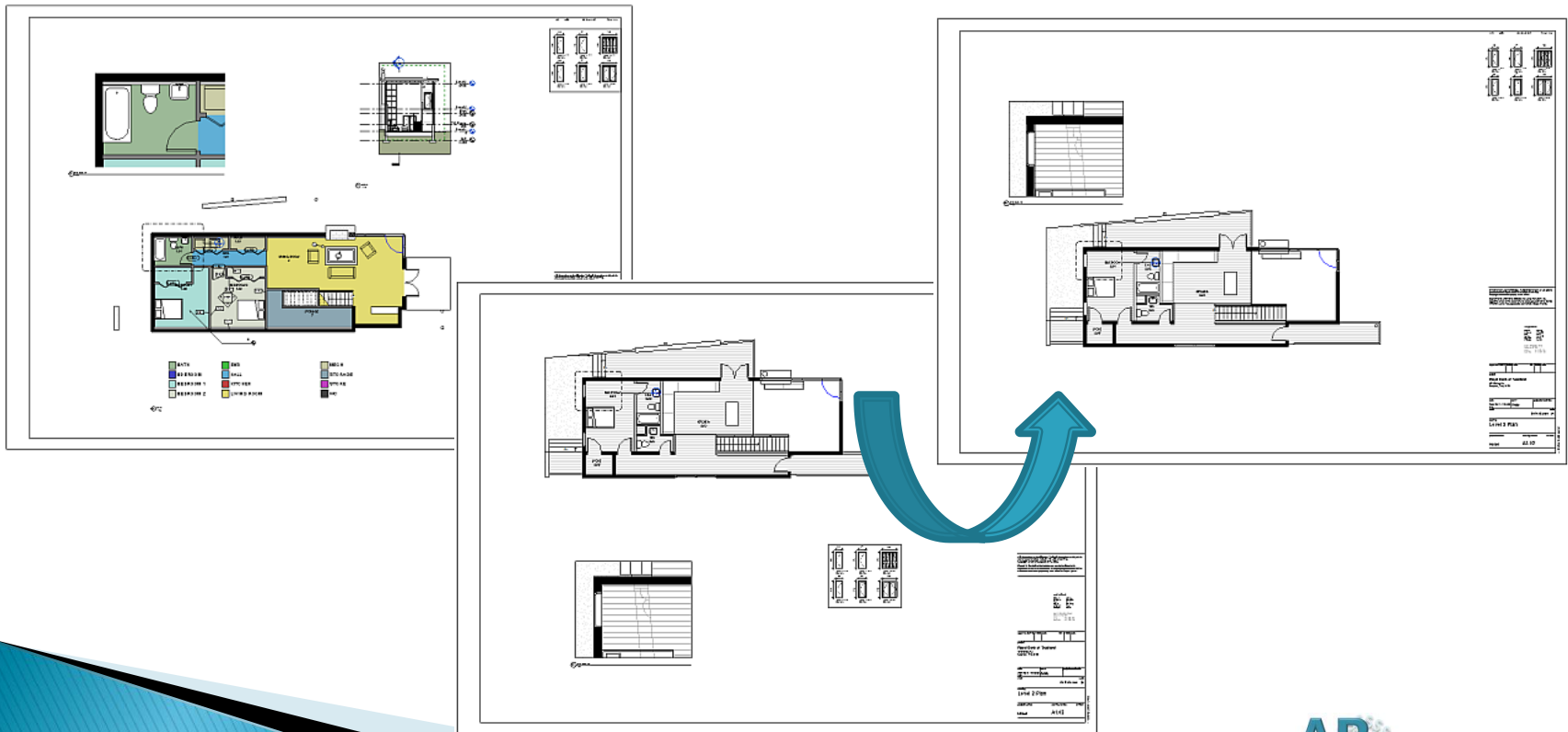
ARUtils – View Placer

- Automatically place views on one or more sheets



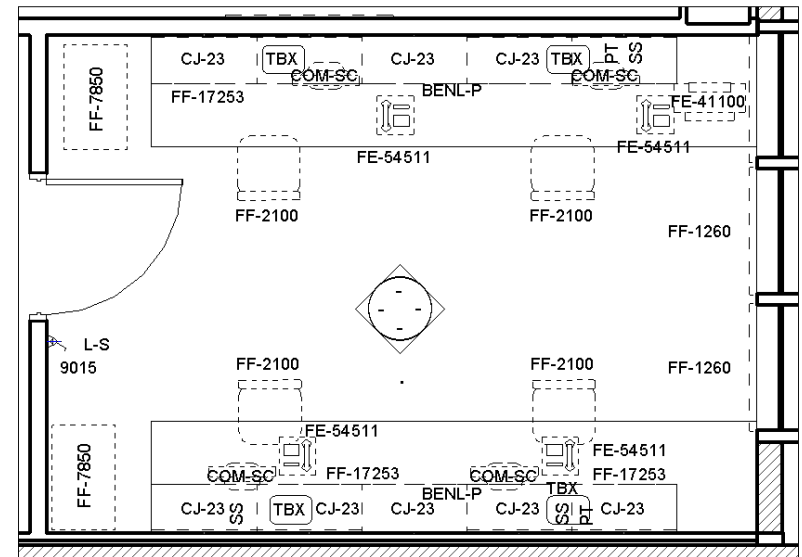
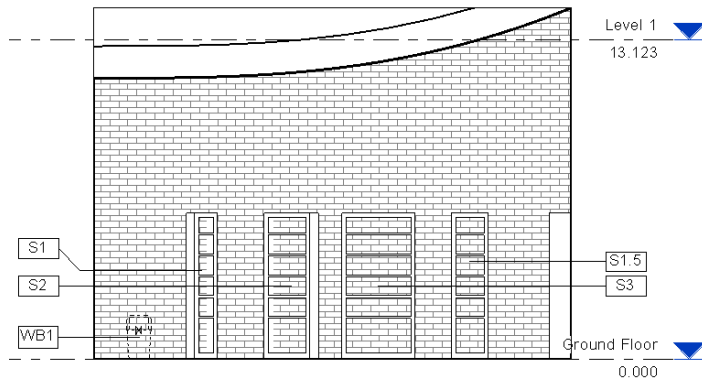
ARUtils – Sheet Manager

- ▶ Automatically create consistent sheets. Align views across sheets, e.g., Align all plans across sheets.



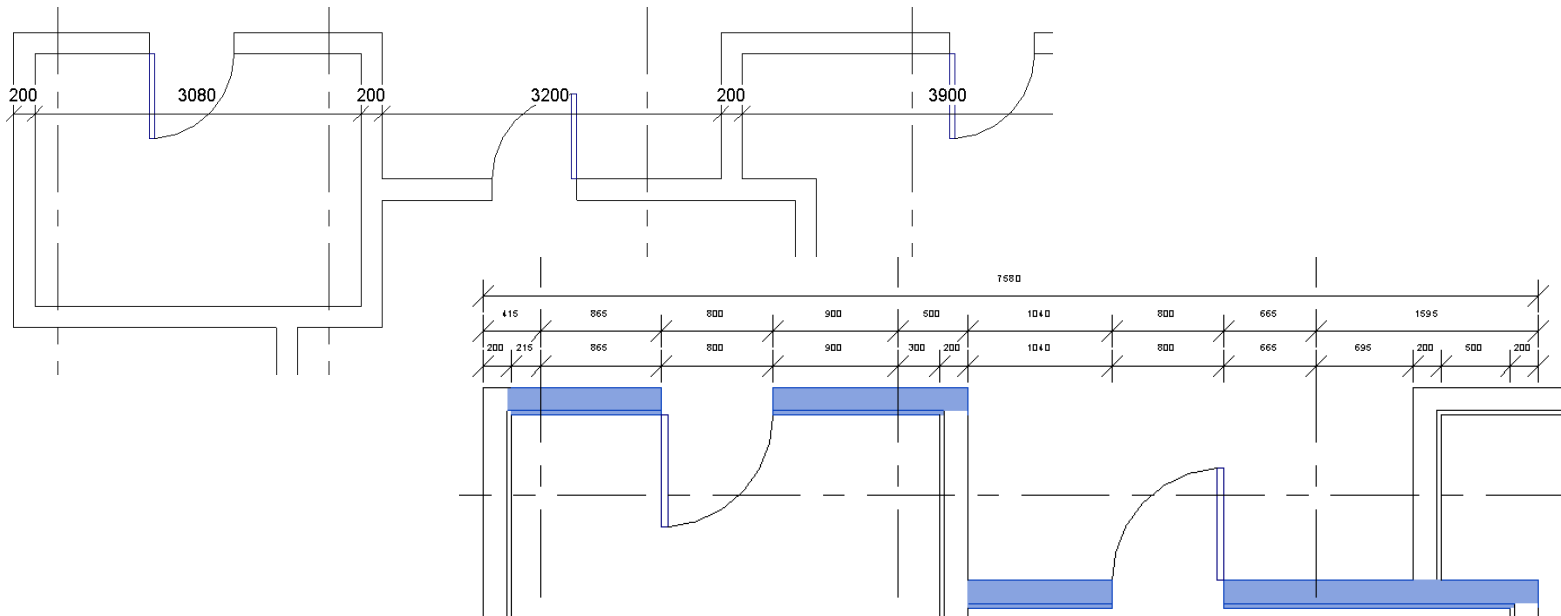
ARUtils – Tag Views

- ▶ Auto tag plans and elevations using multiple categories
- ▶ Detect clashes between tags
- ▶ Specify tag origins and rotations



ARUtils – Dimension Walls

- ▶ Dimension across multiple walls
- ▶ Dimension along multiple walls

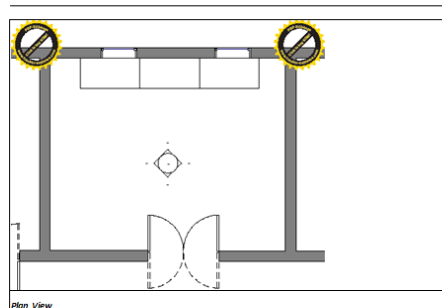


ARUtils – Room Data Sheets

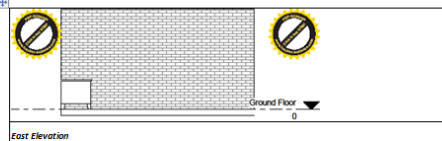
- ▶ Create complex room data sheets
- ▶ Create all views and sheets for multiple rooms

Project: Acme Inc. Project Number: P123.34
 Department: Design Room Number: 1
 Room Name: Meeting Small Room Volume: 77.14 m³

Net Room Area Briefed: 20 m²
 Designed Area: 30 m²
 No of Rooms: 1
 Description:



Plan View



East Elevation

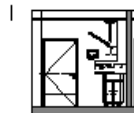
Fittings and Furniture (FF)

ID	Description	Category	Group	Qty	Selection / Remarks
54	1525 x 762mm	Furniture	3		
	1830 x 2083mm	Doors	1		

Acme Inc. Project Number: P123.34
 Department: Design Room Tag: 1
 Room Name: Meeting Small Room Volume: 77.14 m³

Fixtures, Equipment and Associated Services (FE)

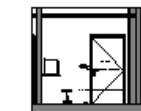
ID	Description	Fixtures, Equipment and Associated Services (FE)	Selection / Remarks
54	1830 x 2083mm		



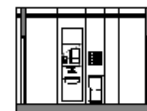
1 WP-000-00-00-Streaming Room Elevation-H



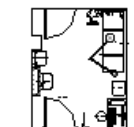
2 WP-000-00-00-Streaming Room Elevation-E



3 WP-000-00-00-Streaming Room Elevation-S

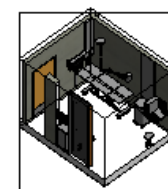


4 WP-000-00-00-Streaming Room Elevation-W

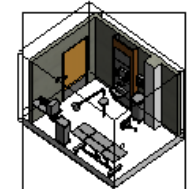


5 Streaming Room WP-000-00-00

ID	Description	Selection / Remarks
54	1830 x 2083mm	



7 WP-000-00-00-Streaming Room m-01



8 WP-000-00-00-Streaming Room m-02

ARUtils – Site Tools

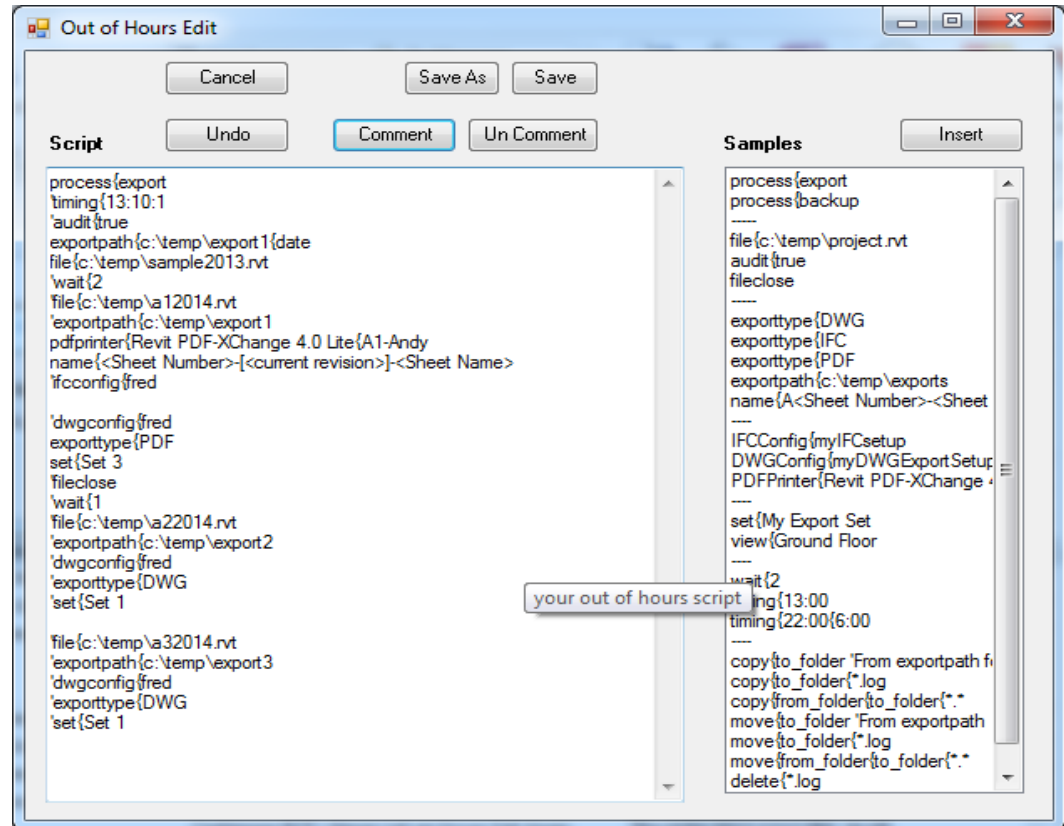
- ▶ Adjust floor to topography
- ▶ Adjust topography to floor
- ▶ Drape lines onto site



A complex floor where the site has been forced to follow the floor

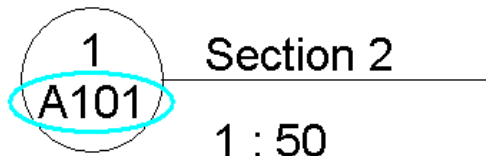
ARUtils – Out of Hours

- ▶ Use simple scripts to create repeatable series of commands
- ▶ Backup, audit and compress your project
- ▶ Export sheets to PDF, DWG, etc.
- ▶ Do this while you are there or while the office is deserted



ARUtils – Other Complex Operations

- ▶ Renumber rooms and anything using the room number, eg. Doors, Windows, Elevations
- ▶ Update Reference Markers
- ▶ Protect Items from Deletion
- ▶ Delete unused reference planes
- ▶ And still more



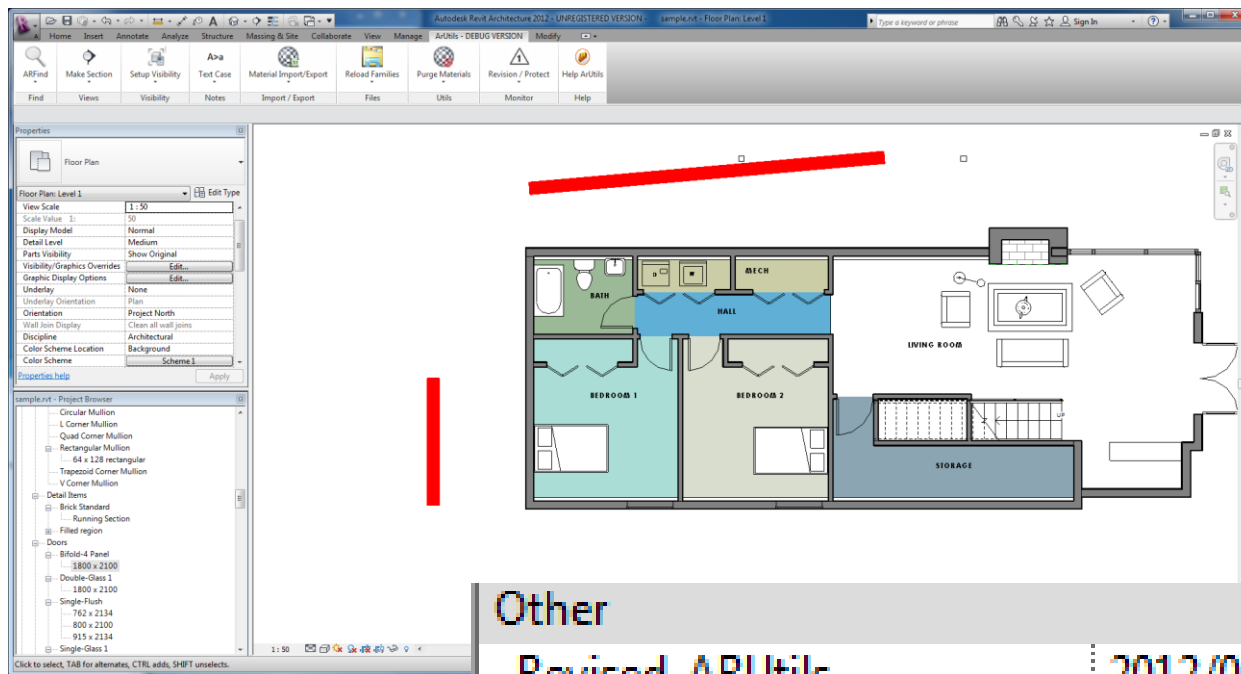
..... G.01-Elevation 1
..... G.01-Elevation 2
..... G.01-Elevation 3
..... G.01-Elevation 4
..... G.02-Elevation 1
..... G.02-Elevation 2

ARUtils – Data Consistency

- ▶ Automatically track changes to your model
- ▶ Roundtrip to Excel, with or without formatting
- ▶ Schedule wall layer information
- ▶ Fix the text case of your project or files
- ▶ Fix all of your families to ANZRS (or your own) standards

ARUtils – Data Consistency

- ▶ Automatically track changes to your model



ARUtils – Data Consistency

- ▶ Import / Export with Excel
 - Rooms, Sheets, Materials, Linestyles, Fillpatterns, Types, and instances
 - Update or Create, by ID or Name

	A	B	C	D	E	F	G	H	I
1	Name	Description	Mark	Delete (1 for de	Comments	Cost	Model	Manufacturer	Keynote
2	Air Barrier - Air Infiltration Barrier			0	Rendering appe		0		
3	Asphalt (system)			0	Rendering appe		0		
4	Blue, Solid			0	Rendering appe		0		
5	brick			0	Rendering appe		0		
6	Carpet (system)			0	Rendering appe		0		
7	Cast-In-Place			0	Rendering appe		0		
8	Concrete - Cast-in-Place Concrete			0	Rendering appe		0		
9	Concrete - Cast-in-Place								
10	Concrete - Precast Concrete								
11	Concrete (system)								

	A	B	C	D	E	F	G	H	I	J	K	L
1	Name	Delete	Length1	Type1	Length2	Type2	Length3	Type3	Length4	Type4	Length5	Type5
2	Aligning Line		3.2	Dash	3.2	Space						
3	Center		6.4	Dash	4.8	Space	15.9	Dash	4.8	Space		
4	Dash dot dot											
5	Dash dot											

	A	B	C	D	E	F	G	H	I	J
18	Name	Delete	Target	GridCount	IsSolid	HostOrientation	Angle1	Spacing1	Angle2	Spacing2
19	2' parallel		Model	1	FALSE	ToView	0	609.6		
20	4 X 8		Model	2	FALSE	ToView	90	2438.4	180	1219.2
21	Aluminum		Drafting	3	FALSE	ToView	Custom Hatch	45	6.4	45
22	Block 8x16		Model	2	FALSE	ToView	0	203.2	90	203.2
23	Block 8x8		Model	2	FALSE	ToView	0	203.2	90	101.6

ARUtils – Data Consistency

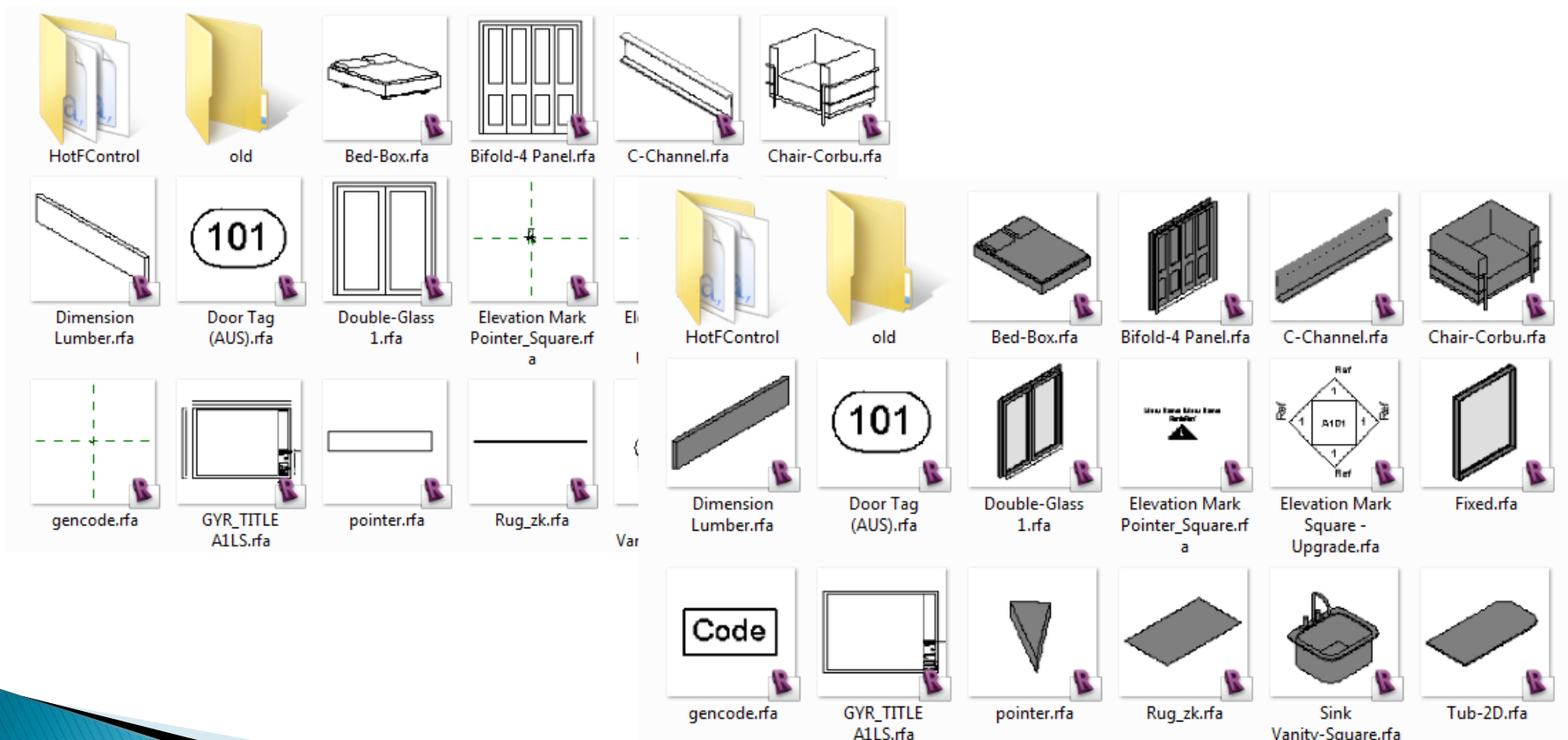
- ▶ Formatted Import / Export with Excel
 - Beautiful Excel formatting
 - Highlight changes
 - Group, sort, total, count
 - Report on Instance, Type, Host, Host Type, and Room

A	B	C	D	E	F
1	impexpCategory	Doors	Instances	c:\temp\rac_basic_sample_project.rvt	
2	Format	New	Deleted	Changed	Unchanged
3	SortGroup		2	1g	
4	groupheader1	Doors for %level%			
5	groupheader2	Sorting by door Mark - not grouped so no Header			
6	grouptotal2	Total 2/ Count2 - no totalling being done because this is not grouped			
7	grouptotal1	Total Costing for %Level%. A count of %count% items.			
8	GrandTotal	Grand Total Cost for %count% items			
9	UniqueID	Mark	RoomNumber	Room	Level
10	title	Identity Data			
11	title				
12	title				

B	C	D	E	F	G	H	I	J	K
Identity Data				Generic Info			Door Details		
Door Number	Room Number	Room Name	Level	In Smoke Wall?	In Fire Wall?	In Acoustic Wall?	ML Door Number	Cost	Door Type
Doors for Level 1									
4			Level 1	0	0	0		80	
29	1.03	HALL 1.03	Level 1	0	0	0		140	DT4
30	1.01	BEDROOM 1 1.01	Level 1	0	0	0		125	DT2
Total Costing for Level 1. A count of 22 items.								2170	
Doors for Level 2									
12			Level 2	0	1	0		75	DT6
1			Level 2	0	1	0		75	DT6
25			Level 2	0	1	0		100	DT1
Total Costing for Level 2. A count of 8 items.								745	
Grand Total Cost for 30 items								2915	
29	1.03	HALL 1.03	Level 1	0	0	0		140	DT4

ARUtils – Data Consistency

► Head of the Family – Fix your families

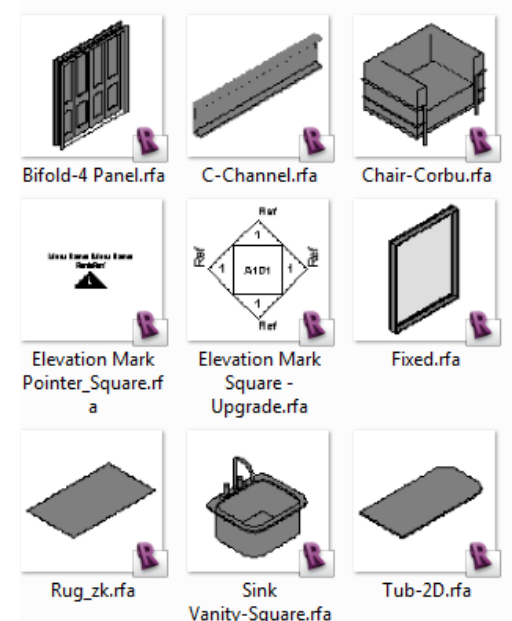


ARUtils – Data Consistency

- ▶ Head of the Family – **CHECK** your families
- ▶ **CHECK** your families for consistency of:
 - Categories and sub categories
 - Materials
 - Parameters
 - Nest Families
 - Text Styles
 - Imports
 - Naming
 - ANZRS Compliance
 - Use of dimensions, reference planes, detail levels, size, etc.

ARUtils – Data Consistency

- ▶ Head of the Family – **FIX** your families
- ▶ **FIX** your families for consistency of:
 - Preview Icons, 2D and 3D
 - Category and sub category weights, colours and materials
 - Material names
 - Parameter names, values, and formulas
 - Text Styles settings, bolding, font, colour, etc
 - Isolate files using imports
 - Naming prefixes



ARUtils – Data Consistency

- ▶ **Head of the Family – Review By Excel File**
- ▶ Report on all the parameters your families use and compare their values side by side

	A	B	C	D	E	F	G
1	File	Family Type	Assembly Code	Description	Material Glass	Material Paddles	Mattress Mate
2	C:\dev-lib\Blstr-Baluster - Round.Rfa	25	NA	myDesc1	NA	NA	NA
3	C:\dev-lib\Cllhd-Callout Head.Rfa		NA	NA	NA	NA	NA
4	C:\dev-lib\Detl-Brick Standard.Rfa	Running Section	NA	NA	NA	NA	NA
5	C:\dev-lib\Dr-Bifold-4 Panel.Rfa	1800 x 2100	C1020	myDesc4	NA	NA	NA
6	C:\dev-lib\Furn-Bed-Box.Rfa	Double 1346 x 1880	E2020200	myDesc5	NA	NA	Mat16
7	C:\dev-lib\Furn-Chair-Corbu.Rfa	Chair-Corbu	E2020200	myDesc6	NA	NA	NA
8	C:\dev-lib\Furn-Chair-Corbu.Rfa	Couch Corbu	E2020200	myDesc6	NA	NA	NA
9	C:\dev-lib\Gyr_Ceiling - Fan With Light.Rfa		D5020220	myDesc8	Glass - Frosted	Wood - Walnut	NA
10	C:\dev-lib\Gyr_Ceiling - Fan With Light.Rfa	100 watt Incandescent	D5020220	myDesc8	Glass - Frosted	Wood - Walnut	NA
11	C:\dev-lib\Gyr_Ceiling - Fan With Light.Rfa	150 watt Incandescent	D5020220	myDesc8	Glass - Frosted	Wood - Walnut	NA
12	C:\dev-lib\Sfrm-C-Channel.Rfa	C10X25	B10	myDesc10	NA	NA	NA
13	C:\dev-lib\Tblk-A1_Arm Pres.Rfa		NA	NA	NA	NA	NA

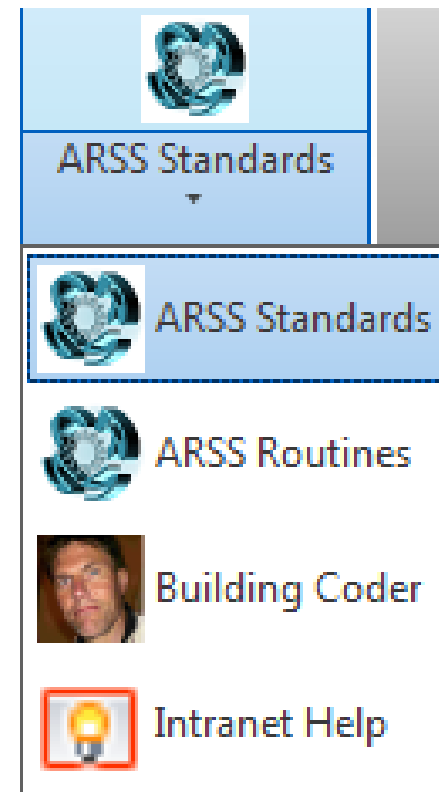
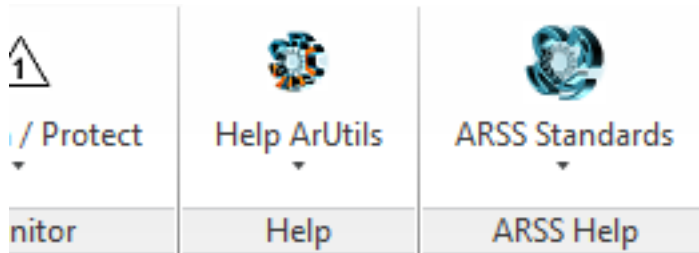
ARUtils – Data Consistency

- ▶ **Head of the Family – Update By Excel File**
- ▶ Update all the parameters your families use and compare their values side by side. Simple control via an Excel file.

	A	B	C	D	E	F	G
1	File	Family Type	Assembly Code	Description	Material Glass	Material Paddles	Material Mattress
2	C:\dev-lib\Blstr-Baluster - Round.Rfa	25	NA	myDesc1	NA	NA	NA
3	C:\dev-lib\Cllhd-Callout Head.Rfa		NA	NA	NA	NA	NA
4	C:\dev-lib\Detl-Brick Standard.Rfa	Running Section	NA	NA	NA	NA	NA
5	C:\dev-lib\Dr-Bifold-4 Panel.Rfa	1800 x 2100	C1020	myDesc4	NA	NA	NA
6	C:\dev-lib\Furn-Bed-Box.Rfa	Double 1346 x 1880	E2020200	myDesc5	NA	NA	Mat16
7	C:\dev-lib\Furn-Chair-Corbu.Rfa	Chair-Corbu	E2020200	myDesc6	NA	NA	NA
8	C:\dev-lib\Furn-Chair-Corbu.Rfa	Couch Corbu	E2020200	myDesc6	NA	NA	NA
9	C:\dev-lib\Gyr_Ceiling - Fan With Light.Rfa		D5020220	myDesc8	Glass - Frosted	Wood - Walnut	NA
10	C:\dev-lib\Gyr_Ceiling - Fan With Light.Rfa	100 watt Incandescent	D5020220	myDesc8	Glass - Frosted	Wood - Walnut	NA
11	C:\dev-lib\Gyr_Ceiling - Fan With Light.Rfa	150 watt Incandescent	D5020220	myDesc8	Glass - Frosted	Wood - Walnut	NA
12	C:\dev-lib\Sfrm-C-Channel.Rfa	C10X25	B10	myDesc10	NA	NA	NA
13	C:\dev-lib\Tblk-A1_Arm Pres.Rfa		NA	NA	NA	NA	NA

ARUtils – Working Together

- Build in your office Help Menus



ARUtils

- ▶ Why would I want **ARUtils**?
 - Move around your model more easily
 - Simplify complex operations
 - Check and correct your data in a fraction of the time.
- ▶ How much time do you and your staff waste with dud families, inconsistent data, laborious processes?

Pricing starts at \$150/license, but all you've seen, plus more, for about \$200 per user! **

Download a free 30 day trial from –
www.arsoftwaresolutions.com.au

** This is based on a **40** user site license. 10 user site licenses are \$480/user

